



Grant Park Advisory Council and Conservancy



Speaker: Bob O'Neill

Presentation: Anthony Pesce

Photos: Paul Kulon and Anthony Pesce

January 27, 2015

Agenda

- Grant Park – A Brief History
- Design Input for Maggie's at the Park Restaurant
- Grant Park Conservancy/Advisory Council
2014 Year-in-Review
- Old Skate Park Reuse, New Tennis Courts Design
- Use of Lollapalooza Funds for Grant Park
- Grant Park Conservancy Organic Community Garden
- Dog Ban in Maggie Daley Park
- Upgraded New GPC Website and Social Media
- Questions and Comments

Grant Park - A Brief History



- 325 Acres of Public Parkland located steps from the Loop Central Business District and Lake Michigan
- Designated as a park in 1836 (Open, Clear and Free) the park was greatly expanded with infill debris from the Great Chicago Fire of 1871
- In 1901 the park was renamed Grant Park after Civil War General and U.S. President Ulysses S. Grant
- Today the Park is home to the Museum Campus (1998), Millennium Park (2004), Maggie Daley Park (2014)
- The Park features events such as The Taste of Chicago, Lollapalooza, The Windy City Wine Festival, Chicago Ale Fest, The Jazz and Blues Festivals, and countless parades

Grant Park – Circa 1923

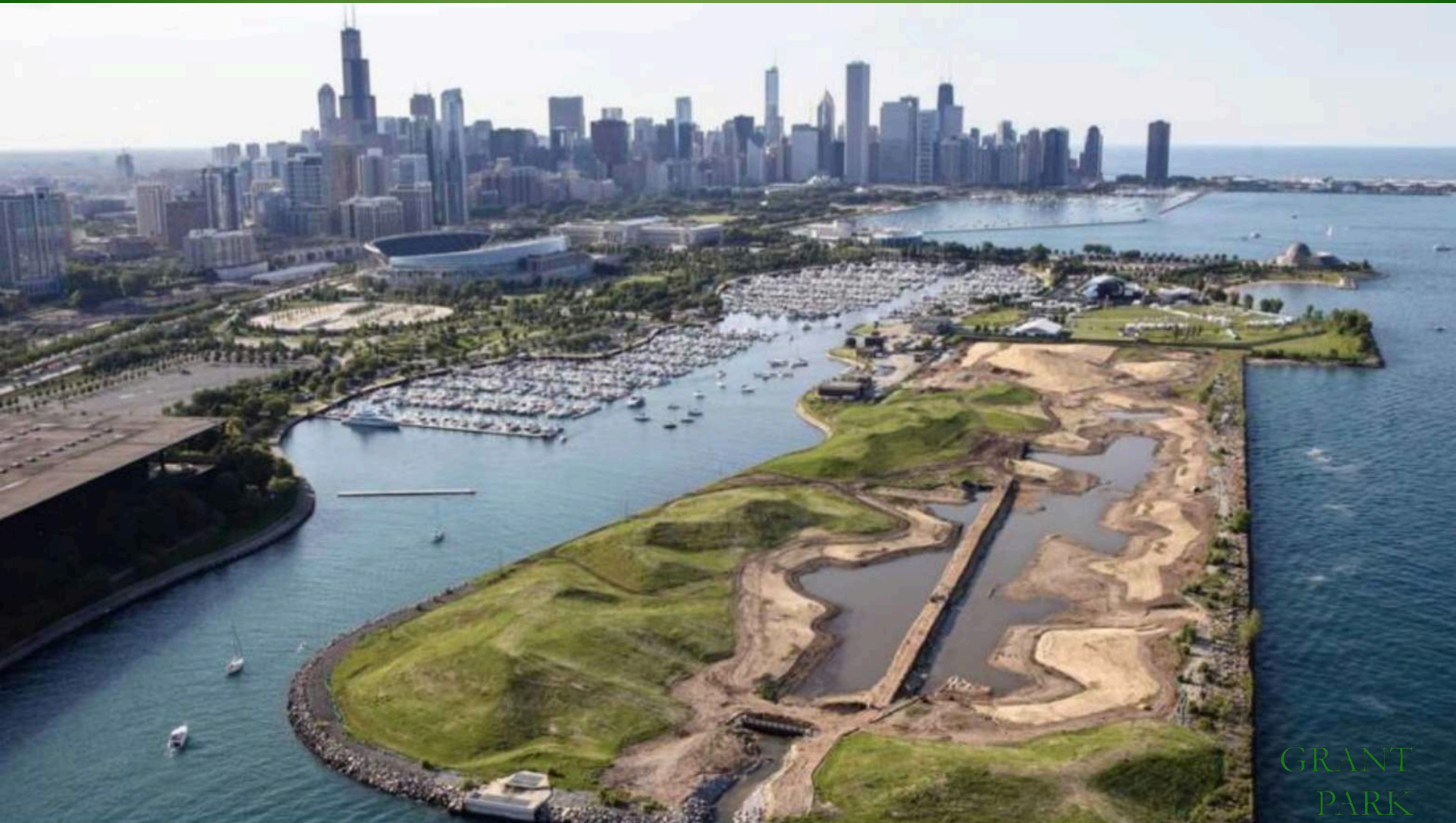


GRANT
PARK

CONSERVANCY



Grant Park and the Museum Campus 2014

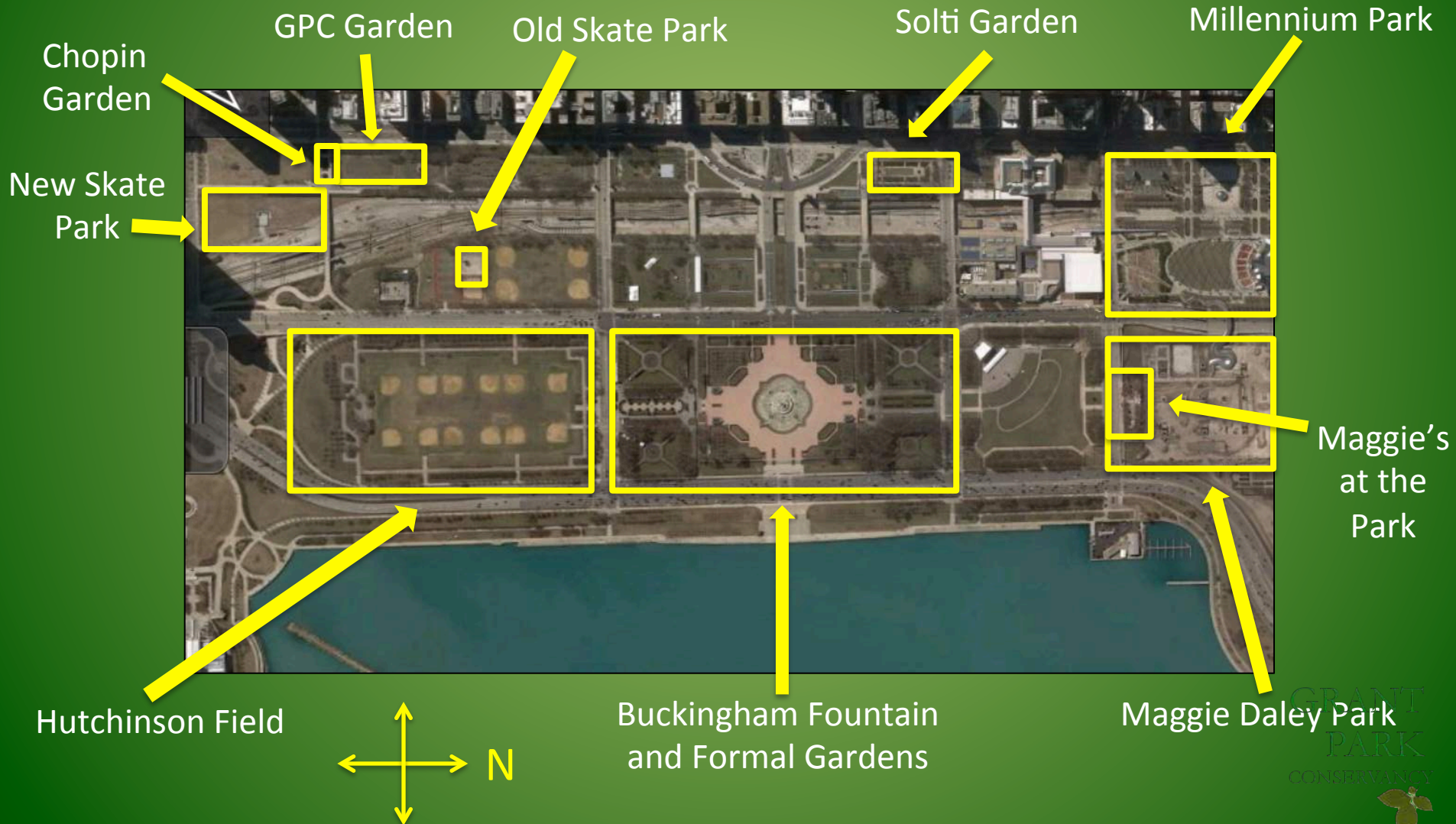


GRANT
PARK
CONSERVANCY

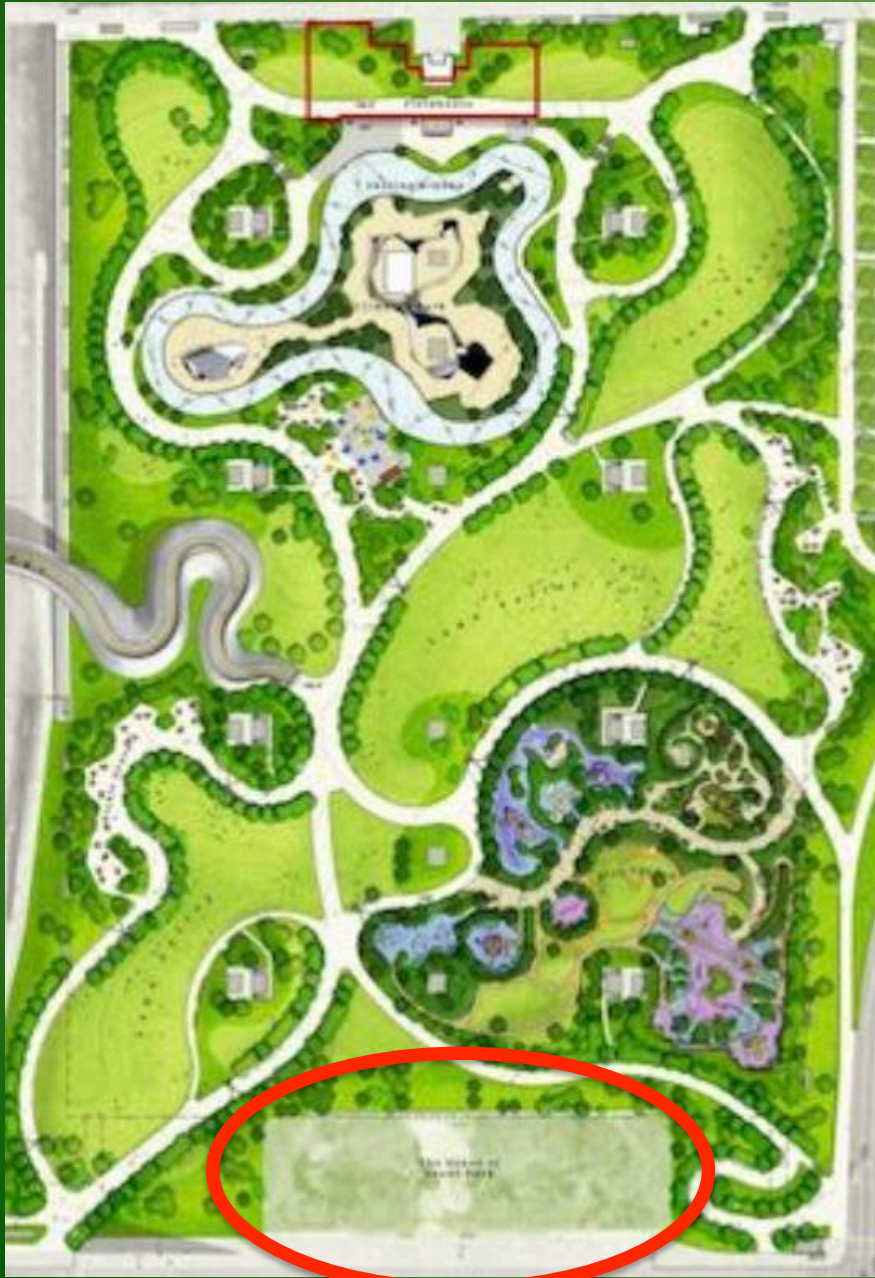


Grant Park

Chicago's Front Yard



Maggie Daley Park – Restaurant



- New Restaurant on the Southern edge of MDP called “Maggie’s”
- Managed by Four Corners Tavern Group, a Chicago-based company
- Design input to ensure that the restaurant seamlessly blends into the new park setting
- Should be accessible to all constituents and with a family-friendly atmosphere

Grant Park Conservancy/Advisory Council

2014 Year-in-Review

- Grant Park Cleanups and Tree Plantings
- Northerly Island making great progress
- Another Successful Lollapalooza
- Windy City Wine Festival's Opening Night: Savour
- Borders Sculpture installation at Solti Garden
- Sir Georg Solti Garden Fashion Pop up
- Chopin Garden Kickoff
- Roosevelt Road Greenway Project
- Grant Park Skate Park Grand Opening
- Maggie Daley Park Transformation
- Museum Campus: Planning for the Future

Grant Park Tree Planting and Mulching



Citi volunteers cleaning the formal gardens surrounding Buckingham Fountain



Northerly Island: Overview



- Northerly Island is being transformed into an urban retreat with several new ecosystems for park goers to explore
- Phase 1 of the project is well-underway with work beginning at the start of 2014 and continuing over 2015 on the middle and southern sections



Northerly Island Progress

- As our skyline has grown, so has our parkland



2000



2010



2014

Northerly Island: Overview



- Northerly Island will contain several restored ecosystems, including the reef and lagoon, the lake and beach, and the hill and forest
- The transformed area will be made up of four quadrants, balancing both passive (natural) and active (concert) uses as well as wooded (forest) and water (lake) features
- Park goers will be able to hike and bike throughout the island terrain and swim and fish in the lagoon

Another Successful Lollapalooza



- Raised \$3.8 Million for the Chicago Park District, \$200,000 of which will go directly into the beautification of Grant Park
- These funds pay for Grant Park upgrades
- Showcases the park on an international stage bringing in \$150 Million to Chicago's economy each year



Savour and the Charlie Trotter Project



- Alumni of the legendary Charlie Trotter's restaurant and culinary colleagues who collaborated with Chef Trotter in his kitchen showcased inspired cuisine paired with artisanal wines from around the world.

- Charlie Trotter's relatives announced the formation of The Trotter Project, a new alumni driven not-for-profit paying tribute to the late culinary master.
- The Trotter Project, in collaboration with The Grant Park Conservancy, played host to The Windy City Wine Festival Opening Night Fundraiser, *Savour*, at Buckingham Fountain on Thursday, September 4, 2014.



Borders Sculptures at the Solti Garden



GRANT
PARK
CONSERVANCY



Sir Georg Solti Garden Fashion Show



- Coordinated a fashion show in conjunction with Columbia College Chicago and the Grant Park Conservancy/Advisory Council

Chopin Garden Kickoff



Roosevelt Road Greenway Project



- The new paths makes travel to and from Grant Park and the new Skate Park even easier

- Project work began in May 2014 on this CDOT effort
- A dedicated east/west bike path was added to the north side of Roosevelt Road
- This aids not only in the bike trip to and from the Roosevelt Road CTA station, but also adds to capacity for overflow walking crowds before and after events at Soldier Field and along the Museum Campus
- Trees will be added to the north and south of the street

Roosevelt Road Greenway Project



View of the new bike lanes, turning lanes, and trees between Wabash and Michigan Avenues

The New Skate Park



Skate Park Grand Opening Celebration

- The only U.S. Skate Park located directly in a city's front yard park
- Adjacent to one of the fastest growing neighborhoods in the Chicago Metro Area (South Loop)
- Project work began June 2014 and finished December 2014

Grant Park Skate Park Transformation

May 2014



December 2014



View Looking South from the 11th St. Bridge

- Difficult area to get to
- 20 feet below grade
- Seldom used northern section

- Activated area brings vitality to the Southwest corner of the park
- Appeals to all demographics, but especially millennials

The New Skate Park



GRANT
PARK

CONSERVANCY



Maggie Daley Park: Overview



- The north section contains an ice skating ribbon and climbing walls along with the rebuilt park district field house.
- The central section runs diagonally across the park from the southwest corner to the northeast corner, connected to Millennium Park via the BP Bridge.
- The southern section contains the children's play area with water features and the new restaurant.



Grant Park Transformation



June 14, 2014 8:00am



GRANT
PARK
CONSERVANCY

Maggie Daley Park Opening



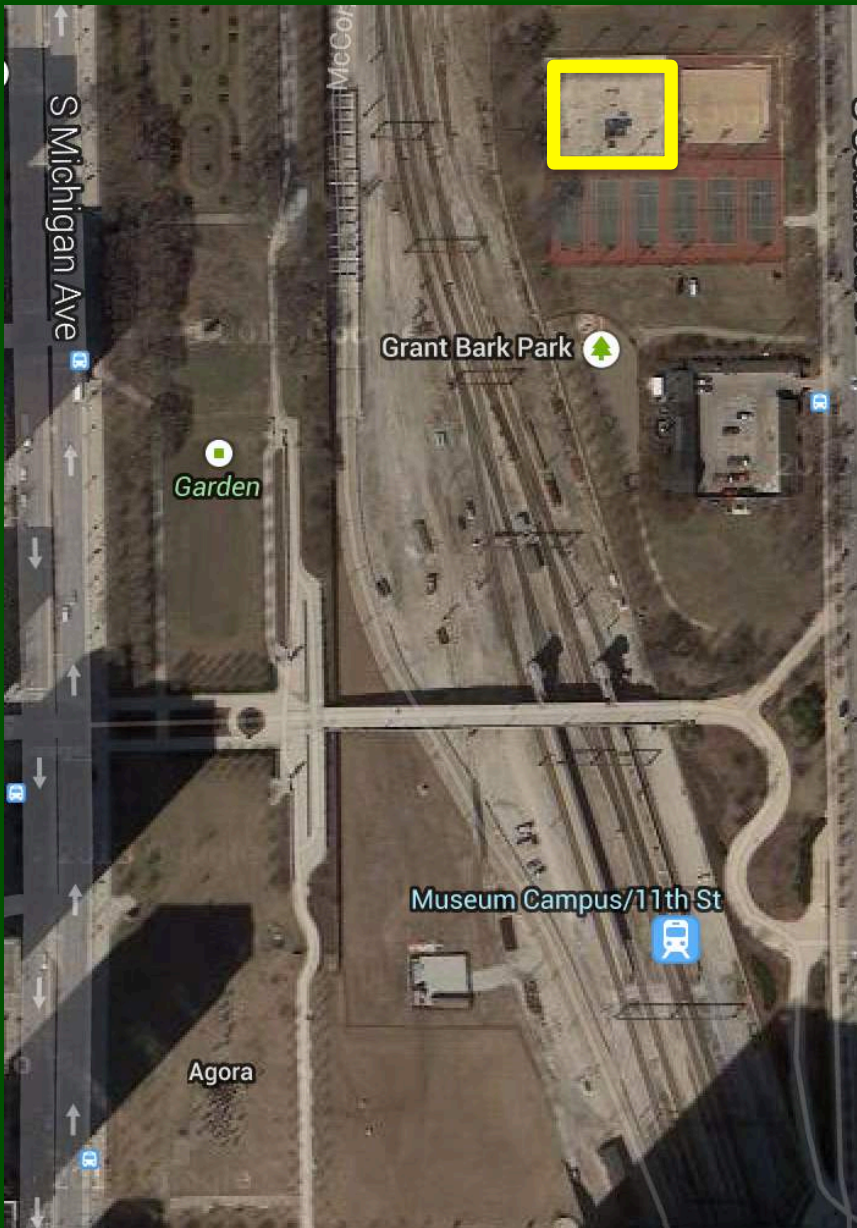
Museum Campus: Planning for the Future



- Public input for a framework plan for the Museum Campus
- Initial transportation plans
- We need a solution to better circulate people into the park and surrounding areas
- Goal is less reliance on autos, more connectivity of institutions, and upgrades to open space



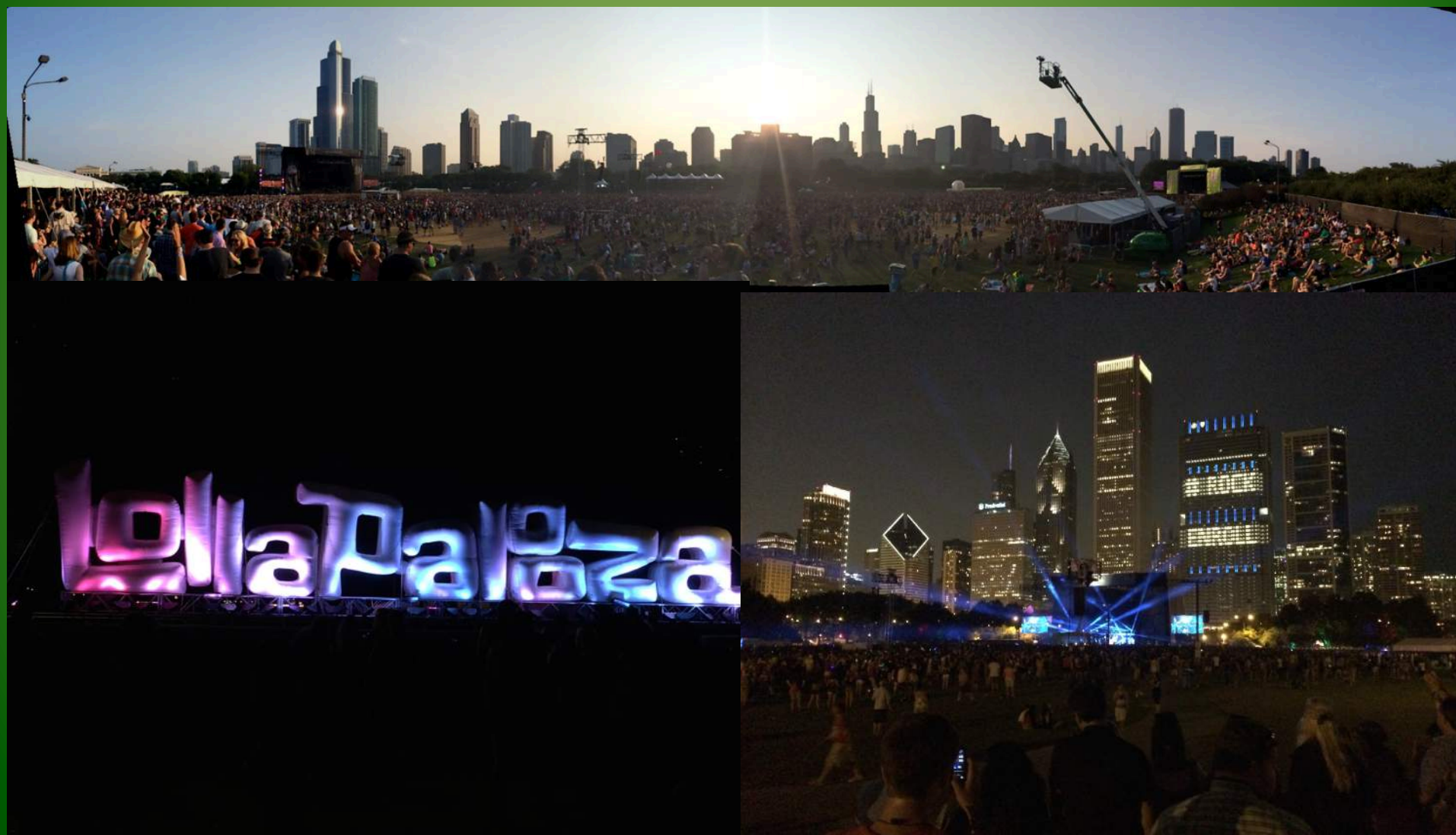
Grant Park Skate Park Potential Reuses



- Additional tennis courts, creating a more modern tennis facility for patrons to enjoy
- Design and architecture are key, mundane structures don't have to look ordinary



Use of Lollapalooza Funds for Grant Park



Grant Park Conservancy Organic Community Garden



South Michigan Avenue and 11th Street

Grant Park Conservancy Organic Community Garden



8. GRAND ENTRANCE - ARCHED PATHWAY



7. GRAND ENTRANCE: COLUMNAR TREES



6. FILBERT MEADOW
(JUST TREES SHOWN)



5. MEADOW
SOFTENS EDGE ON NORTH SIDE



3. HERB / PEONY MEADOW
(ONLY HERBS SHOWN)



3. HERB / PEONY MEADOW
(ONLY PEONY SHOWN)



2. VEGETABLE BERM GROWING BEDS
VEGETABLE BEDS RAISED 1'



1. FRUIT ESPALIER

Maggie Daley Park – Dog Ban



Common Ground

- We all like dogs
- We want dogs and their owners to live in the city
- We want all patrons to enjoy the park

Points of Difference

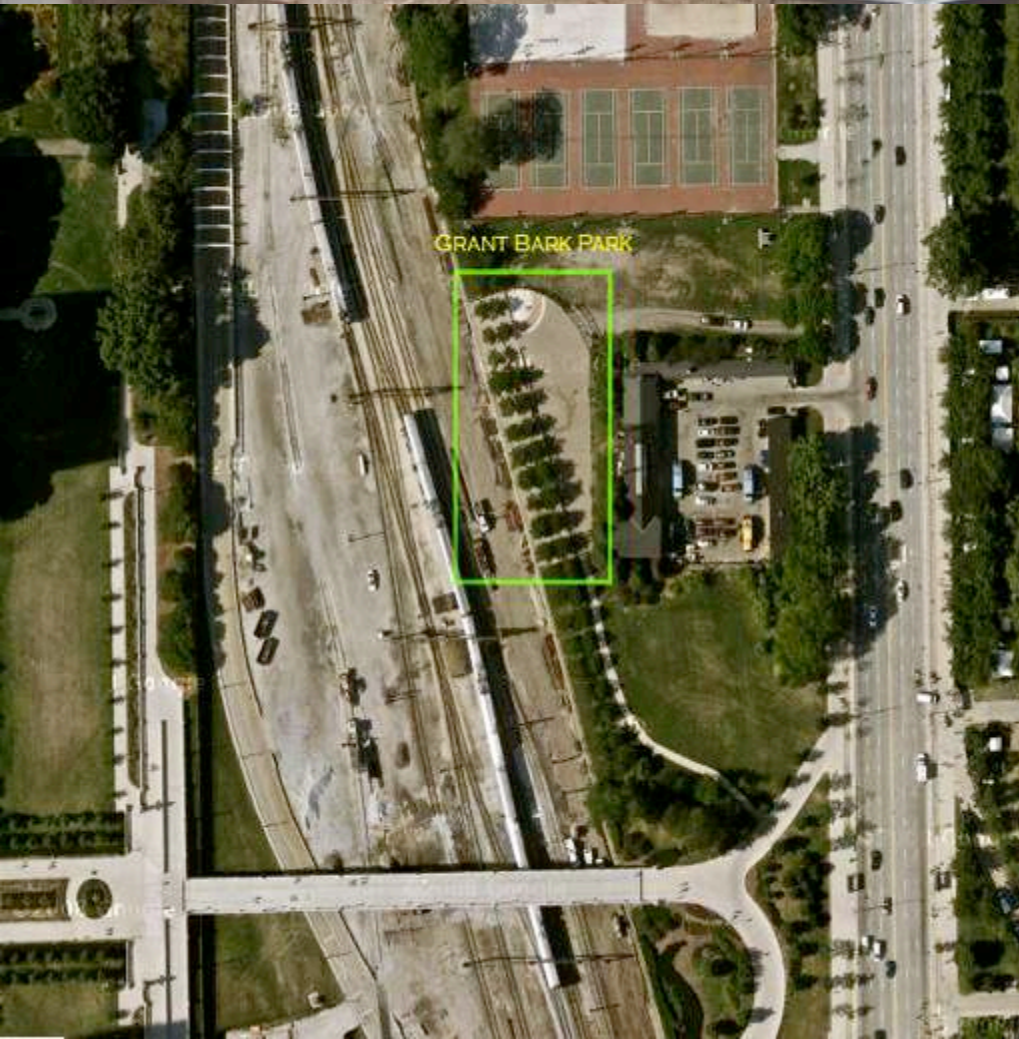
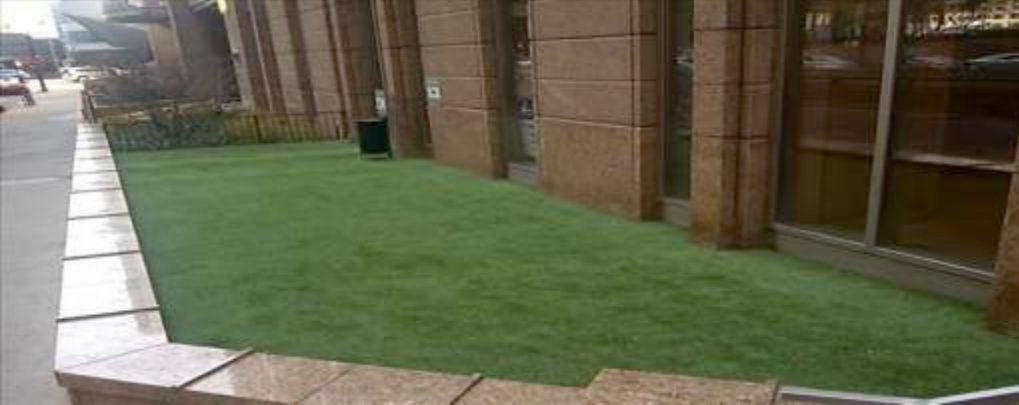
- Dog urine kills grass and destroys plants
- MDP is child and family friendly
- Some owners do not clean up after their dogs
- Not all park patrons, for example those with young children, feel comfortable around dogs, especially larger ones



Similar to Millennium Park dog ban in place since 2004

Dog Ban: Potential Solutions

- Use of Grant Park Bark Park that the Grant Park Conservancy developed with the Chicago Park district
- Use of Lakeshore East Dog Park and Lakeshore East Park
- Designated dog areas outside of buildings
- Sidewalk to lakefront path



Upgraded GPC Website and Social Media

- Come Out and Volunteer!
- Check out our new Website: www.grantparkconservancy.com
- Join our Email Distribution List for updates
- Join our Social Media Sites
 - Grant Park Conservancy Facebook Page
 - Friend us for all of the latest information on Grant Park and Conservancy events
 - Grant Park Conservancy Instagram
 - Beautiful pictures showcasing Chicago's one-of-a-kind front yard
 - Grant Park Conservancy Twitter
 - Follow us to be-in-the-know for all upcoming Conservancy Programming events

Questions and Comments

- Design Input for Maggie's at the Park Restaurant
- Grant Park Conservancy/Advisory Council
2014 Year-in-Review
- Old Skate Park Reuse, New Tennis Courts Design
- Use of Lollapalooza Funds for Grant Park
- Dog Ban in Maggie Daley Park

Thank you for your participation!